

## KSS 800 - AN EFFORTLESS ELEVATOR EXPERIENCE

The KSS 800 destination signalization family features a range of finish options, including anti-fingerprint stainless steel, and attractive signalization alternatives.

# KONE DESTINATION SIGNALIZATION

Unlike conventional elevator control systems, which only register the desired travel direction, our system takes into account desired destination floors and the number of waiting passengers to significantly improve efficiency and convenience.

We offer traditional and hybrid systems. With the traditional system elevators are called using destination operating panels in the lobby and there are no operating panels in the elevator car. The hybrid system includes destination operating panels in the lobby and normal operating panels in the elevator cars.



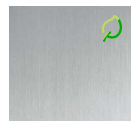

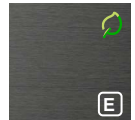

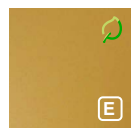
### CAR OPERATING PANEL (COP)



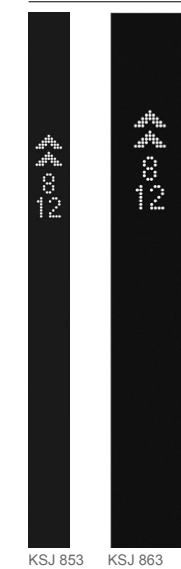
KSC 833      KSC 863      KSC 957 (Selective TTC supported)

- Displays**  
Scrolling dot matrix
- LED color**  
White
- COP buttons**  
Hidden keypad, standard  
Hidden keypad, configurable  
Function buttons according to COP type

### FINISHES

- |   |   |
|---|---|
|    |    |
| F<br>Asturias Satin<br>brushed<br>stainless steel                                     | H<br>Murano Mirror<br>mirror-polished<br>stainless steel                              |
|  |  |
| CB<br>Carbon Black<br>brushed<br>stainless steel<br>(anti-fingerprint)                | CG<br>Copper Gold<br>brushed<br>stainless steel<br>(anti-fingerprint)                 |
|  |   |
| SS2<br>HTIN-Mirror<br>AISI304N8<br>Polished Steel                                     |   |

### JAMB-MOUNTED DESTINATION INDICATORS (JM DIN)



KSJ 853      KSJ 863

## TOUCHSCREEN DESTINATION OPERATING PANEL (DOP)



KSP 858  
with pedestal

**Faceplate finishings:**  
Glass with black back printing

**Finishing**  
Aluminum deep black anodized  
Aluminum light silver anodized

**Buttons**  
Only accessibility button on side,  
others on screen  
Symbol is tactile silver  
NA button white on black

**Displays:**  
Full graphic LCD

**User interface types**  
Keypad  
Grid  
List

**Fixing type**  
Semi-flush (KSP 888)  
Surface mounted (KSP 858)  
Pedestal (KSP 858)

**Access control**  
Reservation for ACS reader



KSP 858  
Surface mounted

## DESTINATION OPERATING PANEL (DOP)



KSP 833

**DOP Buttons**  
Round, surface mounted,  
black with white marking

Australian version:  
stainless steel with black marking

**DOP button markings**  
Normal keypad  
Accessibility button  
No additional buttons

**DOP fixing type**  
DOP surface mounted



KSP 853 AUS

KSP 853

## DESTINATION GUIDANCE DISPLAY (DGD)

A display device KSG 857 is used with KONE Turnstile 1000 (KT1000) in case of integration with KONE Destination Control System and KONE Access or 3rd party ACS provider. Similar device KSG 847 is used with 3rd party turnstiles. They activate a direct home-floor call when a person passes through the turnstile.

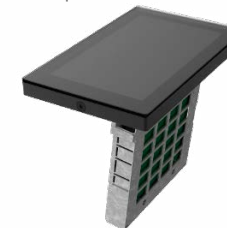


KSG 847  
DGD 3rd party module

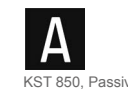
**Faceplate finishing**  
KT100 & KT1000 Top glass with  
black back printing

**Displays**  
Full graphic color LCD 7"

**Fixing type**  
Flush mounted to KT100 &  
KT1000 top rail



## ELEVATOR IDENTIFIERS (EID)



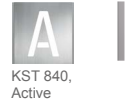
KST 850, Passive



KST 860, Active



KST 830,  
Passive



KST 840,  
Active



KST 880, Passive



KST 890, Active

## DESTINATION INDICATOR AT LANDING (DIN L)



KSO 857



KSO 957